



# **Important Choices Made Easy**

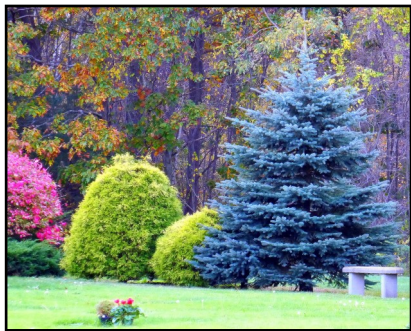
**A Resource For Clear, Easy, Informed  
Cemetery Decisions**

**Puritan Lawn Memorial Park  
Cemetery and Crematory**

# Puritan Lawn Memorial Park



Once a private estate, Puritan Lawn is the oldest memorial park on the East Coast. It is located 15 miles north of Boston, just off of Route 1 in Peabody.



In contrast to traditional cemeteries, Puritan Lawn does not have upright monuments or tombs to interrupt the natural beauty of the landscape.

The park is 140 acres with paved roads that wind their way alongside three bodies of water and through groves of pine and white birch. Quiet sitting areas and immaculately groomed lawns provide an inviting landscape for visitors.

# Make a Difficult Day A Little Easier



Although planning one's final arrangements is not something most of us want to think about, it is one of the greatest gifts you can give your family.

For over eight decades, Puritan Lawn has been a leader in supplying plan-ahead information to the local community. Cemetery

plan-ahead programs have continued to be the cornerstone of Puritan Lawn's charter. Complete information is provided to families and it is up to them to decide how they want to take care of this inevitable need.

It is important that you and your family feel comfortable in the environment that you choose. Puritan Lawn has one of the most naturally beautiful settings in the country and offers a variety of scenic areas to select from. We are one of the few cemeteries in the area where all necessary steps can be planned ahead.

# How Will Your Arrangements be Made?



There are only two ways we see cemetery arrangements made: families together or when a loved one is no longer with them, most often one spouse or partner is alone.

We realize nobody wants to talk about their final cemetery arrangements, however, we also know

planning ahead makes the day of a death much easier for your family.

Families that take the time to plan-ahead together save money and avoid emotional overspending. Whether you prefer a traditional casket interment or cremation arrangements, we can customize a program to fit your needs and budget.

**Planning-Ahead Together is a  
Smart Thing to do**

## Easy Payment Plans

At Puritan Lawn, there are a variety of budget plans available to meet your needs. These budget plans make planning ahead affordable for most families. All cemetery steps can be budgeted for up to five years.

Part of your investment goes directly to a perpetual care trust fund. Only the interest and income from the fund will ever be used for care and maintenance of the park. This means, there will never be any future assessments to you or your heirs for care of the lot.



**Financial Arrangements Available  
to Fit Your Budget**

# Cemetery Planning Steps

## The Cemetery Lot



Puritan Lawn offers family lots in all areas of the cemetery which can accommodate both traditional and cremation interments.

When one family member prefers

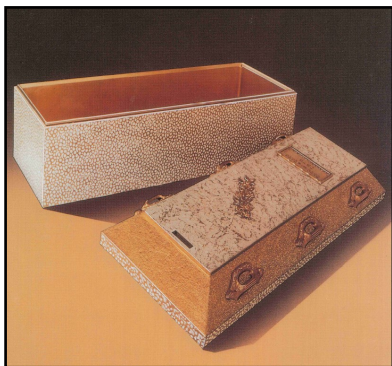
cremation and the other traditional casket burial, your family may select from one of many traditional sections of the park as they will accommodate both types of burials. If you have friends or family at Puritan Lawn, our staff can research the closest available space to them.





# Vaults for Casket Burials

Most cemeteries require the use of a permanent container to receive and protect the casket from the elements. Puritan Lawn vaults are manufactured to the highest of standards with steel reinforced concrete and a polystyrene inner liner.



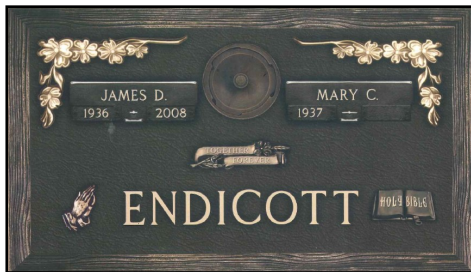
Each model offered has its own unique features, giving you the opportunity to express personal preferences and decide which vault is best for you.

# Memorials



Everyone deserves to be remembered. One of the best ways to celebrate your life and that of your loved ones is with a memorial.

Traditional interment memorials are bronze and have the option of a permanent flower vase. Memorials throughout the park are flush with the ground, maintaining the natural peaceful views visitors will continue to enjoy.





# The Cremation Choice



Cremation is an age-old process that accomplishes in a matter of hours what earth burial does in many years.

To accommodate the growing demand for cremation, Puritan Lawn's state of the art crematory was built in 2004 and will serve families for years to come. The crematory includes a



viewing area, a small gathering area, and glass-front niches that families may arrange to permanently place cremation urns.

# Cremation Urns

We offer urns in a variety of styles, materials & colors.



## Urn Vaults

This container holds the cremation urn and will protect it from soil and moisture after interment.

# Cremation Interment & Memorialization



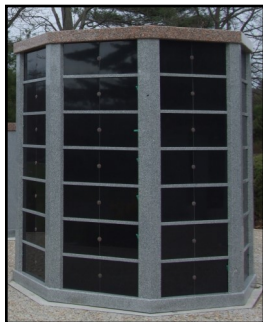
We have a variety of options available for cremation interment which include in-ground lots, indoor and outdoor niches, and even scatterings.

The outdoor columbarium niches are located in a beautiful secluded area overlooking Winona Reservoir. These niches can be memorialized with a custom sandblasted design.

Our indoor glass front niches are the ultimate in beauty, security and protection from the elements.

Many families include a picture with their memorial.

Many options and sections are available for families choosing in-ground burial. Depending on the area, families will choose bronze or granite memorials.



# How Can You Learn More?



## **90% of Puritan Lawn Families Chose to Plan-Ahead**

To learn more about plan-ahead programs available at Puritan Lawn Memorial Park, call or visit 7 days a week. If more convenient, we can even arrange to bring information to your home. To reach us, call (978) 535-3660 or email [familyservice@puritanlawn.com](mailto:familyservice@puritanlawn.com). Visit us on the web at [puritanlawn.com](http://puritanlawn.com).

## **Puritan Lawn Memorial Park Cemetery and Crematory**

185 Lake Street, Peabody, MA 01960 (978) 535-3660

Visit us at [www.puritanlawn.com](http://www.puritanlawn.com)

